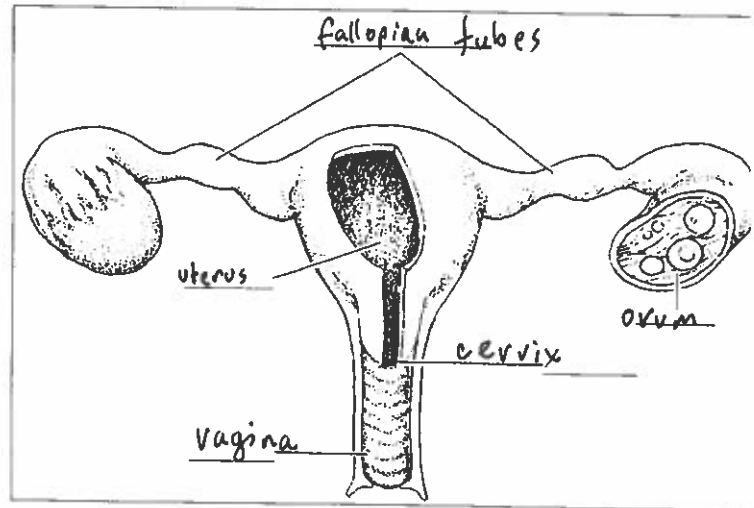
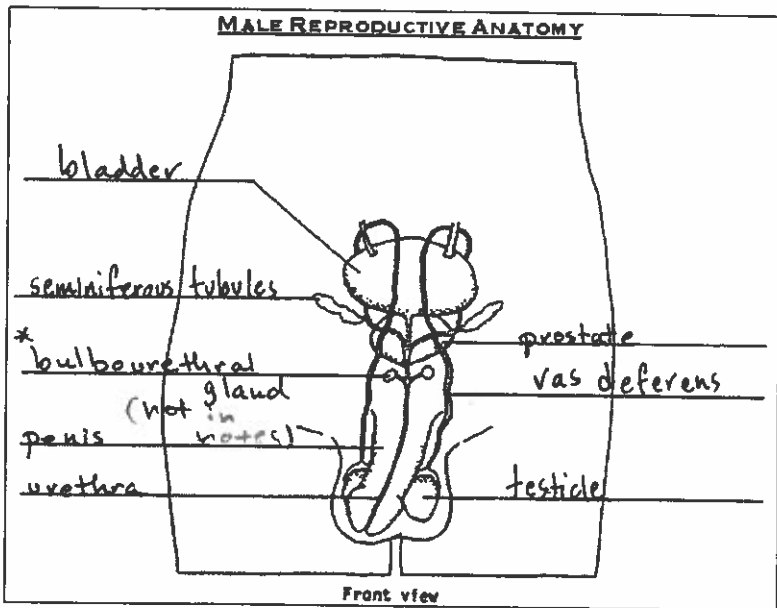


# Practice Test: Human Reproduction

Name: KEY

Label the diagrams below with the correct sex organs 13



Multiple Choice Questions: There is one correct answer for each. 12

- The male hormone testosterone is produced by \_\_\_\_\_.
  1. Testicles
  2. Seminiferous tubules
  3. Epididymis
  4. Vas deferens
- The fertilized egg is called \_\_\_\_\_.
  1. ovum
  2. blastocyst
  3. diploid cell
  4. zygote
- The tube that carries the sperm out of the testes is the \_\_\_\_\_.
  1. vasa efferentia
  2. vas deferens
  3. ovaries
  4. epididymis
- The fertilization of human egg by sperm takes place in \_\_\_\_\_.
  1. ovary
  2. fallopian tube
  3. vagina
  4. uterus
- The onset of the reproductive age is called \_\_\_\_\_.
  1. menstruation
  2. menarche
  3. menopause
  4. puberty
- Sperm are produced at a temperature that is \_\_\_\_\_ the body temperature.
  1. same as
  2. lower than
  3. higher than
  4. immaterial to
- The sperm are temporarily stored in \_\_\_\_\_.
  1. vas deferens
  2. vas eferens
  3. epididymis
  4. bladder

8. A hollow, pear shaped organ. A zygote develops here if the ovum is fertilized by a spermatozoon.

1. Uterus                      2. Ovaries                      3. Cervix                      4. Vagina

9. A woman has two of these. They take turns releasing one ovum about every 28 days. This is called ovulation.

1. Uterus                      2. Ovaries                      3. Cervix                      4. Vagina

10. The neck or opening of the uterus. It dips down about half an inch into the vagina. It is normally plugged by mucus. It stays tightly closed during pregnancy, but thins and opens for the delivery of the baby.

1. Uterus                      2. Ovaries                      3. Cervix                      4. Vagina

11. The passage which the penis penetrates to release its sperm. The baby also leaves from here during birth.

1. Uterus                      2. Ovaries                      3. Cervix                      4. Vagina

12. The ovum released by the follicle travels through the \_\_\_\_\_ to reach the uterus. An ovum survives between 24 and 48 hours here, where it can be fertilized.

1. Labia                      2. Fallopian Tubes                      3. Cervix                      4. Follicle

Use the chart below to "read" the data

1. Progesterone is secreted by \_\_\_\_\_.

1. Ovarian Follicle                      2. Graffian Follicle  
3. Corpus Luteum                      4. Corpus Follicle

2. Ovulation occurs between which day(s)?

1. Seventh to 13<sup>th</sup>                      2. 13<sup>th</sup> to 15<sup>th</sup>  
3. 10<sup>th</sup> to 12<sup>th</sup>                      4. 23<sup>rd</sup> to 27<sup>th</sup>

3. The uterine lining is least thick on which day(s)?

1. Day 11                      2. Day 8                      3. Day 24                      4. Day 1

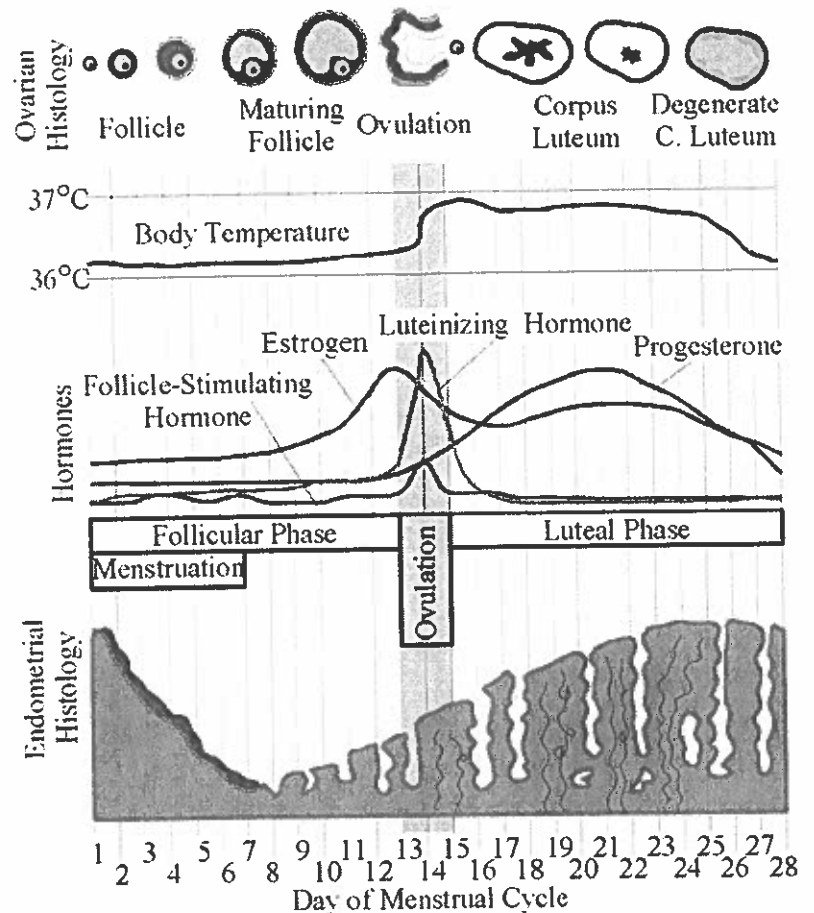
4. Which hormone STARTS ovulation?

*Remember: LH surge*

1. Luteinizing Hormone                      2. Estrogen  
3. Progesterone                      4. FSH

5. Which Phase is Progesterone released?

1. Follicular Phase                      2. Ovulation  
3. Luteal Phase                      4. Menstruation



## More practice!

- Once sperm are produced by the testes they move into and mature in the
  - seminiferous tubes
  - penis
  - vas deferens
  - epididymis
- The purpose of the urethra is to
  - carry only urine
  - carry only semen
  - carry a mixture of semen and urine
  - carry both semen and urine but not at the same time
- The menstrual cycle is triggered each month by
  - the release of blood from the uterus
  - the buildup of the lining of the uterus
  - hormones
  - sexual intercourse

*Not great wording.  
Progesterone drop + thickness of uterus lining.*
- Female infertility can be caused by hormonal problems, blocked fallopian tubes, and
  - a cold
  - lack of appetite
  - irregular menstrual cycles
  - STDs
- Sexual feelings are normal and necessary
  - for reproduction to occur
  - for the heart and lungs to function properly
  - for an ovum to be released from a female's ovary each month
  - for teens to become adults.
- When sexual feelings occur, it is important to
  - consciously choose to act responsibly
  - go to a quiet place and talk about what you are feeling with your partner
  - explore the feelings and do what feels best
  - see a doctor
- The external male reproductive organs consist of the penis, testes, and
  - urethra
  - prostate
  - scrotum
  - seminal vesicle
- The external female reproductive organs include
  - the vagina, the clitoris, and the mons pubis
  - the hymen, the vaginal opening, and the uterus
  - the vaginal opening, the labia majora, and the clitoris
  - the hymen, the ovaries, and the clitoris
- Semen leaves the male body when the penis is erect and
  - urination occurs
  - evacuation occurs
  - excitement occurs
  - ejaculation occurs
- The menstrual cycle is a result of
  - the female body preparing to give birth
  - the female body preparing to produce milk
  - the female body preparing for pregnancy
  - the female body preparing for old age

Indicate whether the sentence or statement is true or false.

- T 11. In order for pregnancy to occur, a male sperm and female ovum must unite.
- F 12. Ova are produced by the fallopian tubes in the female body.
- F 13. The male sex hormone is estrogen.
- T 14. Removing the foreskin that covers the penis at birth is called circumcision.
- F 15. Progesterone and the prostate are two kinds of hormones in the male body.
- F 16. It is easier to make responsible decisions about sexual feelings when you are alone with your boyfriend or girlfriend.
- F 17. Menstrual flow and urine exit the female body through the *same opening*.
- T 18. It is *normal* for males to ejaculate while they are sleeping.
- F 19. PMS is a condition that affects some females *during pregnancy*.
- F 20. An erect penis *cannot* return to its relaxed state without ejaculation.
- T 21. It is not always possible to control feelings of sexual arousal.
- T 22. The body's first response to sexual stimulation includes *increased heart rate, flushing, and faster breathing*.

#### Matching

Match each item with the correct statement below. .

scrotum

cervix

sterility

erection

labia majora

menstruation

uterus

penis

- sterility 23. inability to produce offspring
- scrotum 24. a loose sac of skin that holds the testes
- uterus 25. a hollow muscular organ that receives and holds a fertilized ovum
- cervix 26. the opening to the uterus
- penis 27. a male organ that is used by males both for sexual reproduction and the elimination of body wastes
- labia majora 28. the external female reproductive organs
- menstruation 29. the process of shedding the lining of the uterus
- erection 30. when the sponge-like tissues of the penis fill with blood and the penis becomes enlarged and hard